

icograda
IDA

design week
torino, italia • 13-19 october, 2008

MULTIEXPO

TORINO

OCT 13
19

Carlo Ratti è un architetto e ingegnere che lavora a Torino e insegna al Massachusetts Institute of Technology (MIT), USA.

Si è laureato in ingegneria alla Ecole Nationale des Ponts et Chaussées di Parigi e al Politecnico di Torino. In seguito ha conseguito il PhD in architettura all'Università di Cambridge.

Nel 2000 si è trasferito al MIT per un dottorato Fulbright, lavorando con Hiroshi Ishii al MIT Media Lab.

Nel 2002 ha fondato lo studio di design carlorattiassociati.

Il lavoro dello studio è stato selezionato alla Biennale di Venezia tra gli studi italiani più interessanti.

Nel 2003, Ratti ha fondato il SENSEable City Laboratory al MIT. Il lavoro di questo gruppo sulle città e la tecnologia è stato esposto in un intero padiglione alla Biennale di Venezia del 2006. In precedenza, il gruppo aveva partecipato alla progettazione di 1.000 case in grado di resistere a uno Tsunami in Sri Lanka per la Prajnopaya Foundation.

L'attività di Ratti in Italia ha riguardato un ampio numero di progetti civili, tra cui il Progetto Collegium per la riforma dell'università europea (in collaborazione, tra gli altri, con Umberto Eco) e il Comitato Valdo Fusi per il rinnovamento di una Piazza nel centro di Torino.

La città in tempo reale ormai è reale. Negli ultimi anni, il sempre maggiore dispiegamento di sensori e dispositivi elettronici portatili rende possibile un nuovo approccio allo studio dell'ambiente costruito. Il modo in cui descriviamo e comprendiamo le città viene trasformato radicalmente – così come gli strumenti che usiamo per progettarle e influire sulla loro struttura fisica. Studiare questi cambiamenti da un punto di vista critico e anticiparli è l'obiettivo del SENSEable City Laboratory, un nuovo progetto di ricerca del Massachusetts Institute of Technology. Qui presenteremo tre progetti: il Digital Water Pavilion (DWP), presentato nell'Expo di Saragozza 2008, New York Talk Exchange (MoMA, 2008) and Real Time Rome (Biennale di Venezia, 2006).

RATTI

Carlo Ratti is an Italian architect and engineer who practices in Turin, Italy and teaches at the Massachusetts Institute of Technology (MIT), USA. He graduated in engineering at the Ecole Nationale des Ponts et Chaussées in Paris, and at the Politecnico di Torino. He later earned his MPhil and PhD degrees in architecture from the University of Cambridge, UK. In 2000 he moved to MIT as a Fulbright post-doc, working with Hiroshi Ishii at the MIT Media Lab.

In 2002 Ratti started the design office carlorattiassociati. The office work was selected at the 2004 Venice Biennale as one of the top Italian practices.

In 2003, Ratti started the research group SENSEable City Laboratory at MIT. The group's work on cities and technology was featured in an entire pavilion at the 2006 Venice Biennale. Previously, the group was involved in the design of 1.000 Tsunami resistant houses in Sri Lanka for the Prajnopaya Foundation.

Ratti's activity in Italy has embraced a number civil projects, including the Progetto Collegium for the reform of European university (in association, among others, with writer Umberto Eco) and the Comitato Valdo Fusi for the renewal of a Piazza in the center of Turin.

<http://www.carloratti.com/>

The real-time city is now real! The increasing deployment of sensors and hand-held electronics in recent years is allowing a new approach to the study of the built environment. The way we describe and understand cities is being radically transformed – alongside the tools we use to design them and impact on their physical structure. Studying these changes from a critical point of view and anticipating them is the goal of the SENSEable City Laboratory, a recent research initiative at the Massachusetts Institute of Technology. Three projects will be presented here: the Digital Water Pavilion (DWP), presented at the 2008 World Expo in Zaragoza, New York Talk Exchange (MoMA, 2008) and Real Time Rome (Venice Biennale, 2006).

C

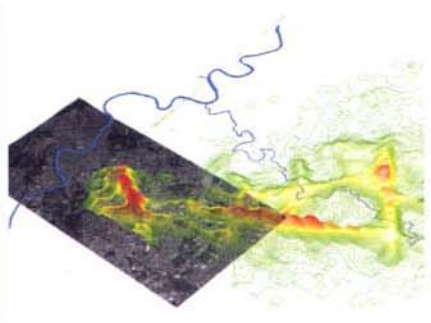
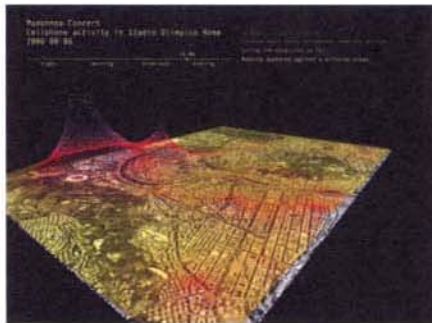
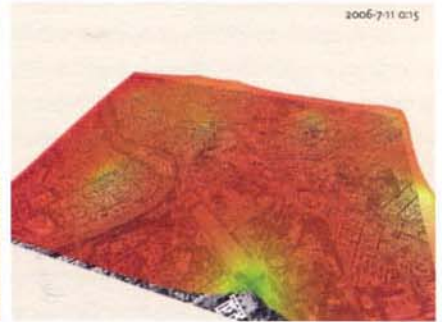
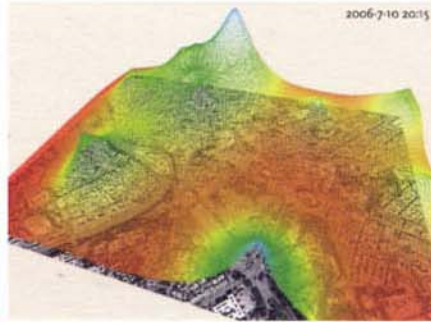
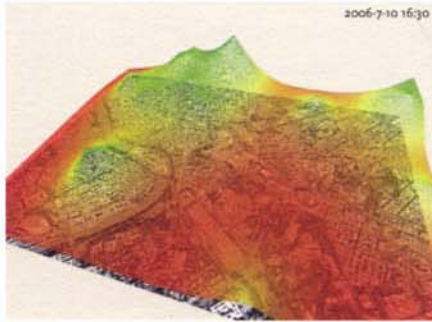
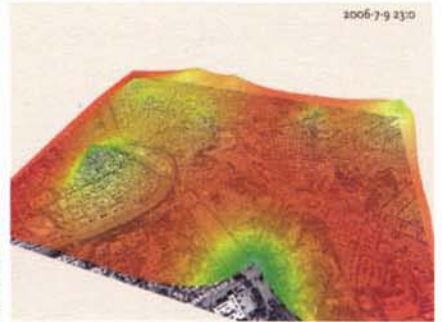
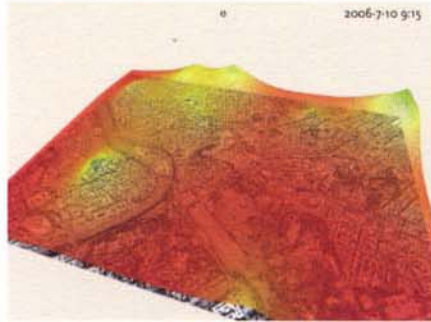
REAL-TIME ROME.

FINAL MATCH, WORLD CUP 2006: AVERAGE CELLPHONE USERS DISTRIBUTION ON THE SATELLITE IMAGE OF THE CITY OF ROME.

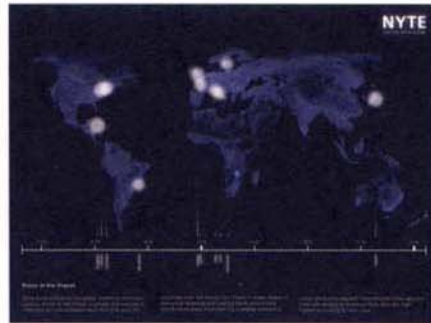
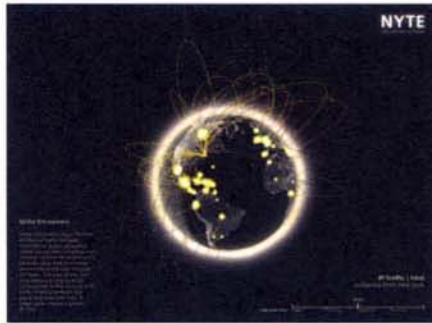
THE FINAL MATCH OF THE WORLD CUP 2006 WAS PLAYED ON JULY 9TH, FROM 8 TO 10PM APPROXIMATELY.

AFTERWARDS, PEOPLE STARTED CELEBRATING AROUND THE CIRCO MASSIMO IN ROME, SHOWN IN THE IMAGE.

THE FOLLOWING DAY THE ITALIAN WINNING TEAM ARRIVED IN ROME AND CELEBRATIONS CONTINUED FROM THE AFTERNOON TILL MORNING.



← REAL-TIME ROME COMBINES DIFFERENT DATASETS IN A SINGLE INTERFACE: REAL-TIME DATA, GIS DATA AND RASTER IMAGES
 ←← AVERAGE CELLPHONE USERS DISTRIBUTION ON THE SATELLITE IMAGE OF THE CITY OF ROME JUST BEFORE MADONNA'S CONCERT ON 6 AUGUST 2006, 7PM (COLOR IMAGE). A LARGE CROWD IS ASSEMBLING AROUND THE OLYMPIC STADIUM



→ 01 NYTE - GLOBE ENCOUNTERS

→→ 02 NYTE - PULSE OF THE PLANET

→→→ 03 NYTE - WORLD WITHIN NEW YORK